



GAT MONTHLY MEMBERSHIP PROGRESS REPORT

Results as of: 4/30/2023

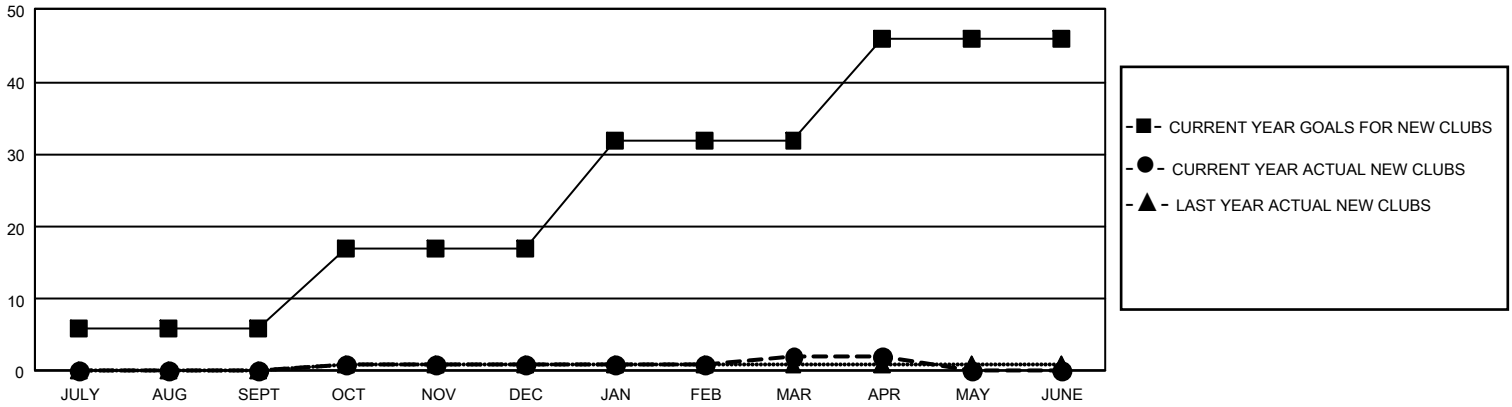
GMT Constitutional Area 4, Group A

REPORT DOES NOT INCLUDE CLUBS IN UNDISTRICTED AREAS.

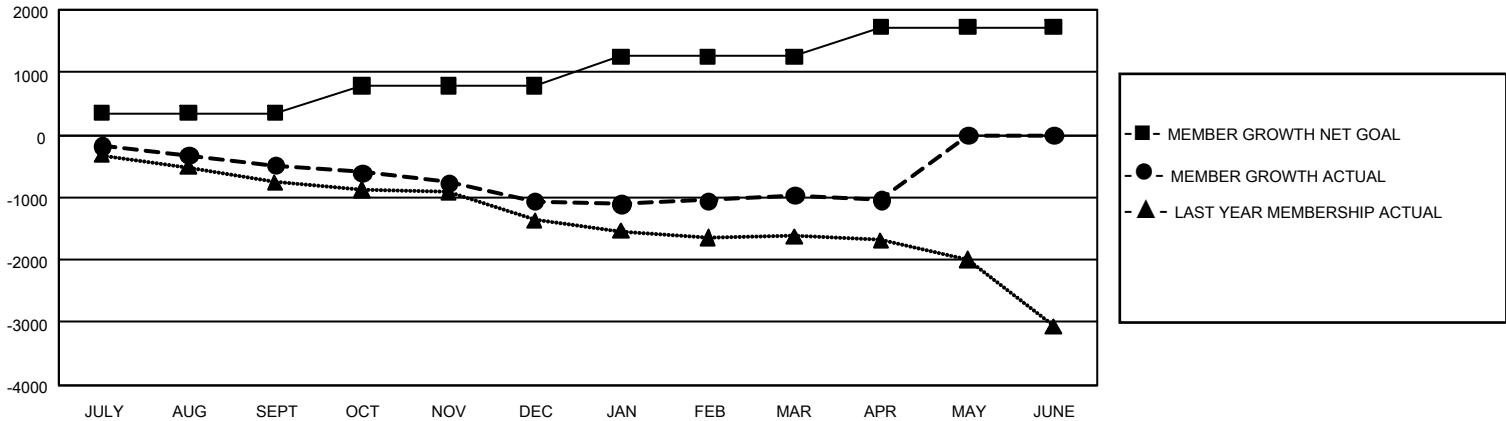
| Clubs | | | |
|-----------------------|---------------|-----------|---------------|
| RESULTS FOR 2022-2023 | | | |
| QUARTER | NEW CLUB GOAL | NEW CLUBS | DROPPED CLUBS |
| JULY/AUG/SEPT | 18 | 0 | 24 |
| OCT/NOV/DEC | 33 | 1 | 16 |
| JAN/FEB/MAR | 45 | 1 | 9 |
| APR/MAY/JUNE | 42 | 0 | 1 |

| Members | | | |
|-----------------------|------------------------|----------------------|--|
| RESULTS FOR 2022-2023 | | | |
| QUARTER | MEMBER GROWTH NET GOAL | MEMBER GROWTH ACTUAL | DROPPED MEMBERS ACTUAL (including transfers) |
| JULY/AUG/SEPT | 346 | 387 | 810 |
| OCT/NOV/DEC | 442 | 703 | 1,231 |
| JAN/FEB/MAR | 466 | 975 | 798 |
| APR/MAY/JUNE | 466 | 242 | 293 |

GOALS AND ACTUAL NEW CLUBS CUMULATIVE



GOALS AND ACTUAL MEMBERS CUMULATIVE



| | | | |
|------------------------|--|---------------------------------|-----------------|
| DROPPED CLUBS: 50 | 949 CLUBS OF 1,966 ADDED 1 OR MORE NEW MEMBERS | <u>GENDER DISTRIBUTION</u> | |
| | | MALE | 31,948 (76.76%) |
| <u>DROPPED MEMBERS</u> | | FEMALE | 9,674 (23.24%) |
| DECEASED | 435 | NON BINARY | 0 (0.00%) |
| CLUB CANCELLED | 187 | PREFER NOT TO ANSWER | 1 (0.00%) |
| OTHER | 2,510 | TOTAL FAMILY UNIT MEMBERS | 1,577 |
| TOTAL | 3,132 | FAMILY MEMBERS PAYING HALF DUES | 782 |

[CLICK HERE FOR CUMULATIVE MEMBERSHIP DATA](#)